

For Sale

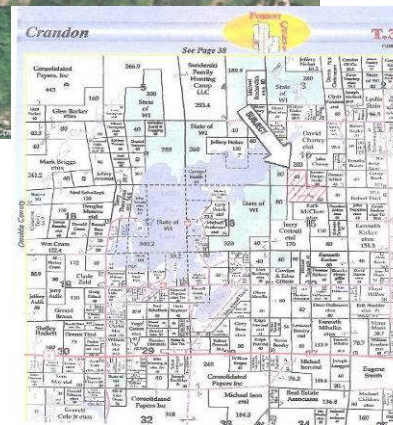
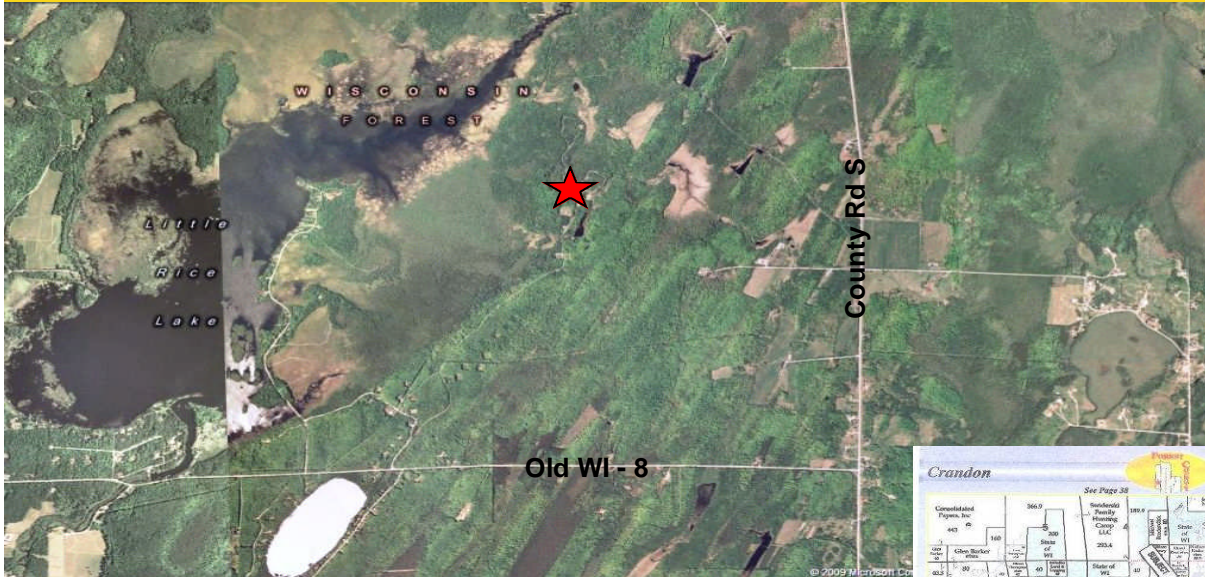
Land with Cottage - Ideal Hunting Retreat

5968 Birch Road • Crandon, WI 54520



GRUBB & ELLIS.
Pfefferle
Independently Owned and Operated

Forest County



The Offering

- 120 acres of “wild” hunting retreat
- Adjacent to hundreds of acres of DNR land, which borders Little Rice Lake
- Located several miles west of Crandon; north off of Hwy 8
- 1,400 SF maintenance-free cabin (almost “New”)

Snapshot

Asking Price: \$299,000
Residence: 1,400 SF (Built in 2000)
Acreage: 120 Acres
(Note: Owner may be able to reduce acreage and price pro rata)

To learn more, please contact:

Grubb & Ellis | Pfefferle
1263 Main St., Ste. 124
Green Bay, WI 54302
920.884.5000 main
920.884.6943 fax
www.grubb-ellis.com
www.gepwi.com

Mark Denis, SIOR  *Expect more.*
Matt Denis
Arlene Denis
Commercial Real Estate Advisors
920.560.5092 direct
920.362.7489 cell
markd@gepwi.com

Participating with

www.CabelasTrophyProperties.com

The information contained herein was obtained from sources believed reliable, however, Grubb & Ellis | Pfefferle makes no guarantees, warranties, or representations as to the completeness or accuracy thereof. The presentation of this property is submitted subject to errors, omissions, change of price or conditions prior to sale or lease, or withdrawal without notice.

BROKER DISCLOSURE TO NON-RESIDENTIAL CUSTOMERS

- 1 Prior to negotiating on your behalf the Broker must provide you the following disclosure statement:
- 2 **BROKER DISCLOSURE TO CUSTOMERS**
- 3 You are a customer of the broker. The broker is either an agent of another party in the transaction or a subagent of another broker
- 4 who is the agent of another party in the transaction. The broker, or a salesperson acting on behalf of the broker, may provide
- 5 brokerage services to you. Whenever the broker is providing brokerage services to you, the broker owes you, the customer, the
- 6 following duties:
- 7 ■ The duty to provide brokerage services to you fairly and honestly.
- 8 ■ The duty to exercise reasonable skill and care in providing brokerage services to you.
- 9 ■ The duty to provide you with accurate information about market conditions within a reasonable time if you request it, unless
- 10 disclosure of the information is prohibited by law.
- 11 ■ The duty to disclose to you in writing certain material adverse facts about a property, unless disclosure of the information is
- 12 prohibited by law (See Lines 47-55).
- 13 ■ The duty to protect your confidentiality. Unless the law requires it, the broker will not disclose your confidential information or the
- 14 confidential information of other parties (See Lines 22-39).
- 15 ■ The duty to safeguard trust funds and other property the broker holds.
- 16 ■ The duty, when negotiating, to present contract proposals in an objective and unbiased manner and disclose the advantages and
- 17 disadvantages of the proposals.
- 18 Please review this information carefully. A broker or salesperson can answer your questions about brokerage services, but if you
- 19 need legal advice, tax advice, or a professional home inspection, contact an attorney, tax advisor, or home inspector.
- 20 This disclosure is required by section 452.135 of the Wisconsin statutes and is for information only. It is a plain-language summary of
- 21 a broker's duties to a customer under section 452.133 (1) of the Wisconsin statutes.

CONFIDENTIALITY NOTICE TO CUSTOMERS

- 22 **BROKER WILL KEEP CONFIDENTIAL ANY INFORMATION GIVEN TO BROKER IN CONFIDENCE, OR ANY INFORMATION**
- 23 **OBTAINED BY BROKER THAT HE OR SHE KNOWS A REASONABLE PERSON WOULD WANT TO BE KEPT CONFIDENTIAL,**
- 24 **UNLESS THE INFORMATION MUST BE DISCLOSED BY LAW OR YOU AUTHORIZE THE BROKER TO DISCLOSE PARTICULAR**
- 25 **INFORMATION. A BROKER SHALL CONTINUE TO KEEP THE INFORMATION CONFIDENTIAL AFTER BROKER IS NO LONGER**
- 26 **PROVIDING BROKERAGE SERVICES TO YOU.**
- 27 **THE FOLLOWING INFORMATION IS REQUIRED TO BE DISCLOSED BY LAW:**
- 28 1. MATERIAL ADVERSE FACTS, AS DEFINED IN SECTION 452.01 (5g) OF THE WISCONSIN STATUTES (SEE LINES 47-55).
- 29 2. ANY FACTS KNOWN BY THE BROKER THAT CONTRADICT ANY INFORMATION INCLUDED IN A WRITTEN INSPECTION
- 30 REPORT ON THE PROPERTY OR REAL ESTATE THAT IS THE SUBJECT OF THE TRANSACTION.
- 31 TO ENSURE THAT THE BROKER IS AWARE OF WHAT SPECIFIC INFORMATION YOU CONSIDER CONFIDENTIAL, YOU MAY LIST
- 32 THAT INFORMATION BELOW (SEE LINES 35-36). AT A LATER TIME, YOU MAY ALSO PROVIDE THE BROKER WITH OTHER
- 33 INFORMATION YOU CONSIDER TO BE CONFIDENTIAL.
- 34 **CONFIDENTIAL INFORMATION:**
- 35 _____
- 36 _____

37 **NON-CONFIDENTIAL INFORMATION** (The following information may be disclosed by Broker): _____

38 _____
39 *(INSERT INFORMATION YOU AUTHORIZE THE BROKER TO DISCLOSE SUCH AS FINANCIAL QUALIFICATION INFORMATION.)*

CONSENT TO TELEPHONE SOLICITATION

- 40 I/We agree that the Broker and any affiliated settlement service providers (for example, a mortgage company or title company) may
- 41 call our/my home or cell phone numbers regarding issues, goods and services related to the real estate transaction until I/we
- 42 withdraw this consent in writing. **List Home/Cell Numbers:** _____
- 43 _____

SEX OFFENDER REGISTRY

- 44 *Notice: You may obtain information about the sex offender registry and persons registered with the registry by contacting the*
- 45 *Wisconsin Department of Corrections on the Internet at: <http://offender.doc.state.wi.us/public/> or by phone at 877-234-0085.*

DEFINITION OF MATERIAL ADVERSE FACTS

- 46 A "material adverse fact" is defined in Wis. Stat. § 452.01(5g) as an adverse fact that a party indicates is of such significance, or that
- 47 is generally recognized by a competent licensee as being of such significance to a reasonable party, that it affects or would affect
- 48 the party's decision to enter into a contract or agreement concerning a transaction or affects or would affect the party's decision
- 49 about the terms of such a contract or agreement. An "adverse fact" is defined in Wis. Stat. § 452.01(1e) as a condition or occurrence
- 50 that a competent licensee generally recognizes will significantly and adversely affect the value of the property, significantly reduce
- 51 the structural integrity of improvements to real estate, or present a significant health risk to occupants of the property; or information
- 52 that indicates that a party to a transaction is not able to or does not intend to meet his or her obligations under a contract or
- 53 agreement made concerning the transaction.
- 54 _____
- 55 _____

No representation is made as to the legal validity of any provision or the adequacy of any provision in any specific transaction.

Copyright 2006 by Wisconsin REALTORS® Association

Grubb & Ellis/Pfefferle 200 E. Washington St. Ste 2A, Appleton WI 54911-5490

Linda Ince

Phone: (920) 968-4700

Fax: (920) 968-4300

Produced with ZipForm™ by RE FormsNet, LLC 18025 Fifteen Mile Road, Clinton Township, Michigan 48035 www.zipform.com

Drafted by Attorney Richard J. Staff

For Sale

Land with Cottage - Ideal Hunting Retreat

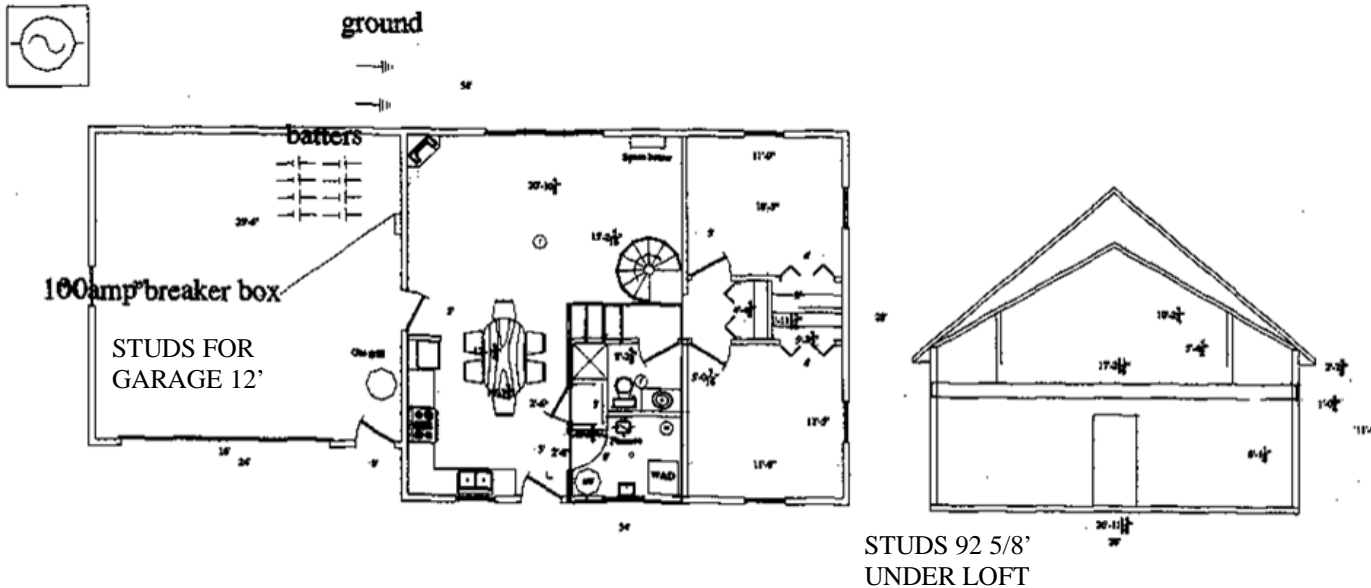
5968 Birch Road • Crandon, WI 54520



GRUBB & ELLIS.
Pfefferle
Independently Owned and Operated

Forest County

15 kw generator



To learn more, please contact:

Grubb & Ellis | Pfefferle
1263 Main St., Ste. 124
Green Bay, WI 54302
920.884.5000 main
920.884.6943 fax
www.grubb-ellis.com
www.gepwi.com

Mark Denis, SIOR  *Expect more.*

Matt Denis
Arlene Denis

Commercial Real Estate Advisors
920.560.5092 direct
920.362.7489 cell
markd@gepwi.com

Participating with


Cabela's TROPHY PROPERTIES
www.CabelasTrophyProperties.com

1,400 SF maintenance free cabin built in 2000 features:

- Two bedrooms with loft
- Fireplace
- Well & septic
- Two stall attached garage
- 15KW generator with double inverter battery power supply (The generator charges the batteries, the batteries transfer the charge to the two inverters, and the two inverters distribute the power through the fuse box.)